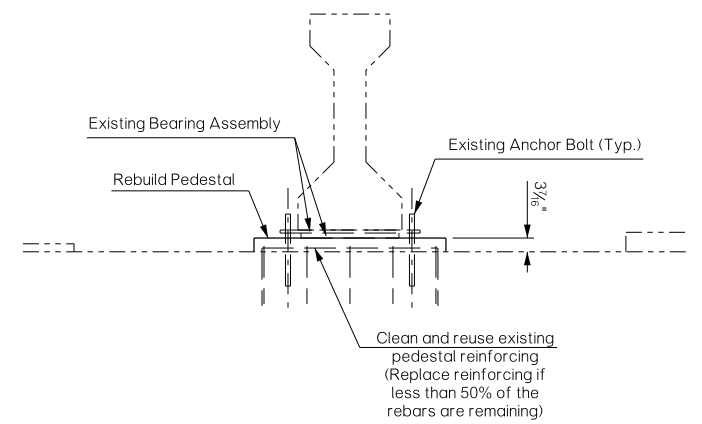
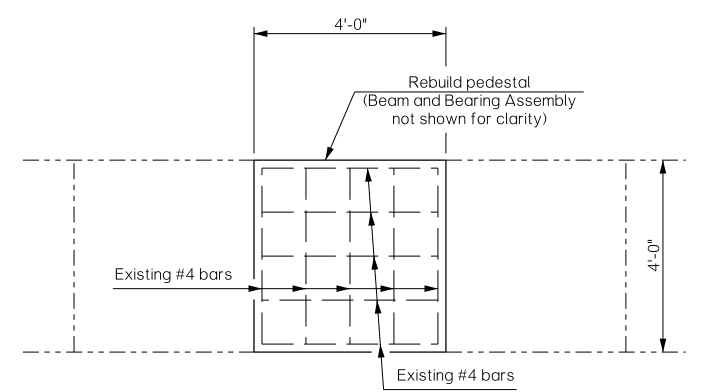
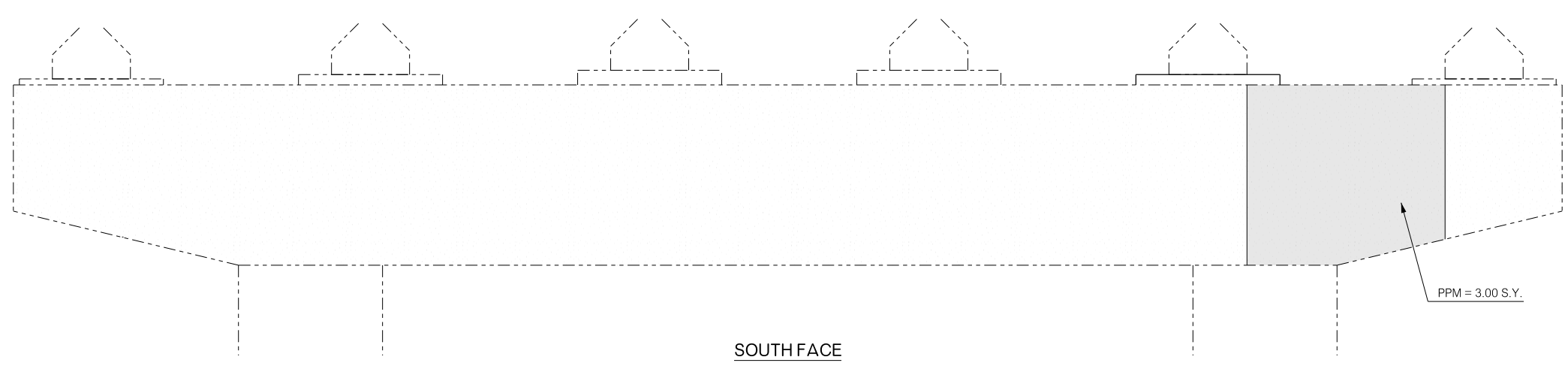
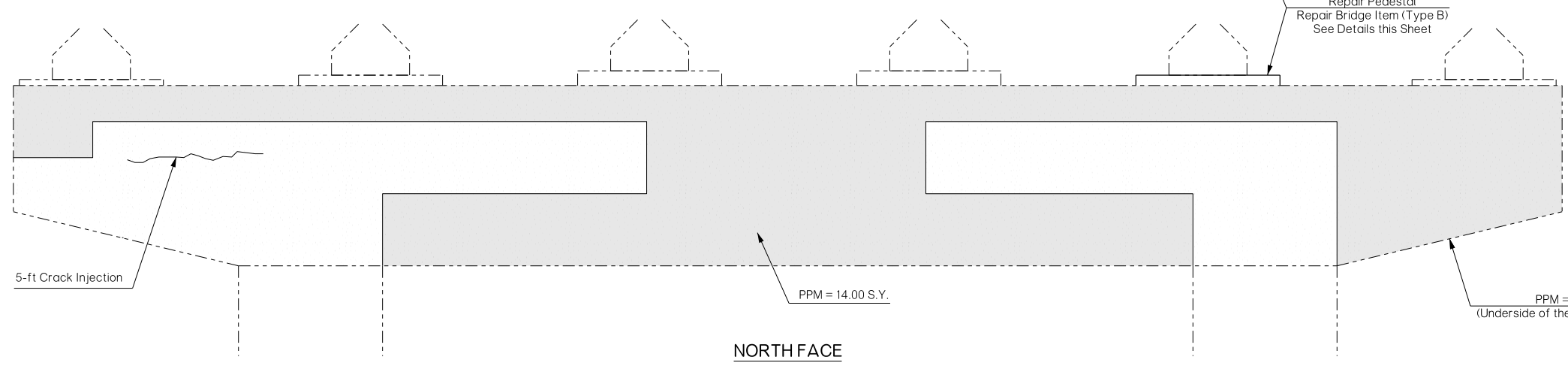
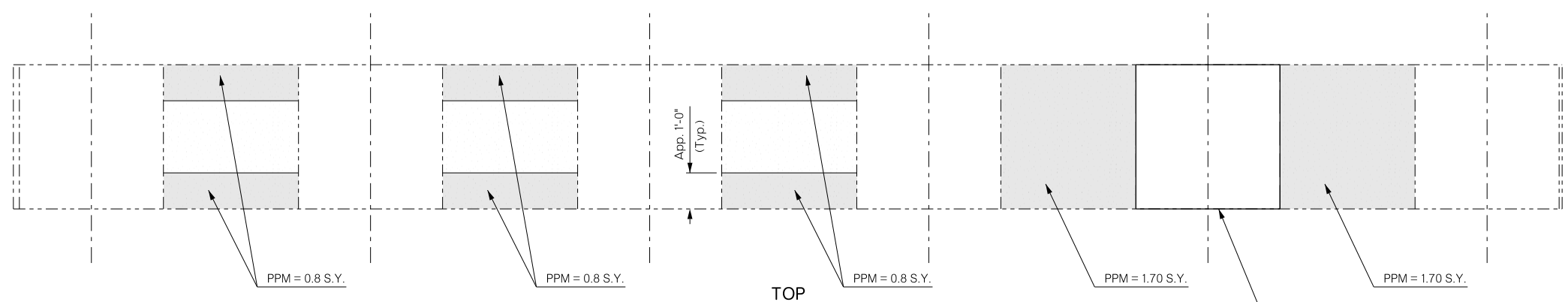


REVISIONS		
REV. NO.	DESCRIPTION	DATE



**PEDESTAL REPAIR
REPAIR BRIDGE ITEM (TYPE B)**

- NOTES:
- Repair Second Pedestal from the East as identified on this sheet. Items Falsework Jacking and Repair Bridge Item (Type B) are for repair of the Pedestal. Use Class "A" Concrete to restore the Pedestal to its original dimensions.
 - The location and Extent of Patching (Pneumatically placed mortar) and Crack Injection must be approved by the Engineer.
 - Apply Corrosion Inhibitor to the entire Pier Cap after Patching has been completed.

PIER NO. 1 QUANTITIES		
DESCRIPTION	UNIT	QTY.
(PL) Falsework Jacking	LSUM	1.00
(PL) Repair Bridge Item (Type B)	EA	1.00
Preparation of Cracks, Above Water	LF	5.00
Epoxy Resin, Above Water	GAL	0.20
Pneumatically Placed Mortar	SY	25.70
(SP) Corrosion Inhibitor (Surface Applied)	SY	90.00
(SP) Carbon Fiber-Reinforced Polymer	SF	630.00

① See Sheet B007 for Fiber Wrap location.

- LEGEND
- ▭ Pneumatically Placed Mortar, PPM
 - ▭ Epoxy Crack Injection
 - ▭ Corrosion Inhibitor (Surface Applied), CI

PIER NO. 1
Details of Pneumatically Placed Mortar and Corrosion Inhibitor

BRIDGE "A" U.S.-283 OVER WASHITA RIVER		ROGER MILLS COUNTY		Design	MLC	04/16
PIER NO. 1 REPAIR				Detail	WDY	04/16
				Check	MLC	04/16
				Squad	HARJO	
				Engr.	MOLLA-ESMAIL	
STATE OF OKLAHOMA		DEPARTMENT OF TRANSPORTATION				
JOB/PIECE NO. 31699(04)		SHEET NO. B004				